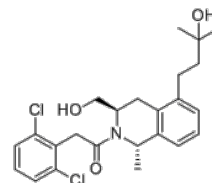


Product Name : LY3154207
Cat. No. : PC-73068
CAS No. : 1638667-79-4
Molecular Formula : C₂₄H₂₉Cl₂NO₃
Molecular Weight : 450.4
Target : Dopamine Receptor
Solubility : 10 mM in DMSO



Biological Activity

LY3154207 (Mevidalen, LY-3154207) is a potent, and subtype selective human **dopamine D1** positive allosteric modulator (PAM) with EC₅₀ of 3.0 nM.

LY3154207 displays exquisite selectivity over the human D5 receptor subtype (EC₅₀>10 uM), and 14 other GPCRs, including D2, β1, β2, and 5HT6 receptors.

Mevidalen enhanced wakefulness (latency to fall asleep) in the hD1 mouse in a dose dependent [3-100 mg/kg, orally (PO)] fashion.

Mevidalen promoted wakefulness in mice after prior sleep deprivation and delayed sleep onset by 5.5- and 15.2-fold compared with vehicle-treated animals.

Mevidalen demonstrated a dose-dependent increase in latency to sleep onset in human clinical investigations.

References

Hao J, et al. *J Med Chem.* 2019 Oct 10;62(19):8711-8732.

McCarthy AP, et al. *J Pharmacol Exp Ther.* 2022 Mar;380(3):143-152.

Caution: Product has not been fully validated for medical applications. Lab Use Only!

E-mail: tech@probechem.com